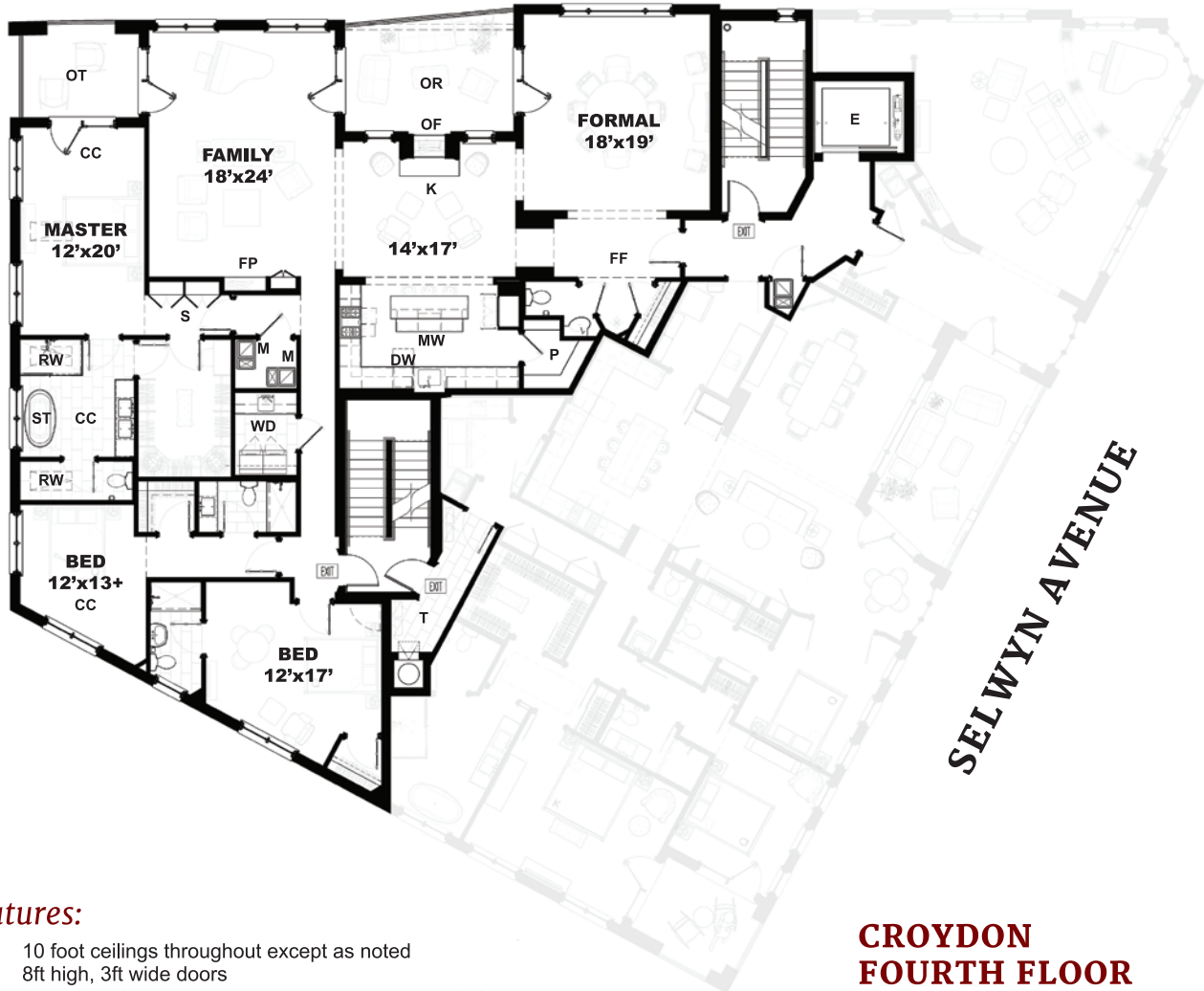


CROYDON ROAD



Features:

- 10 foot ceilings throughout except as noted
- 8ft high, 3ft wide doors
- CC Cathedral Ceilings over Master Bedroom, Bath & Corner Bedroom
- E Elevator to Street Level Lobby/Gated Garage Parking
- FF Formal Foyer 5'-8" x 12'-0"
- FP Large Contemporary Fireplace
- K Kitchen Keeping Room with Fireplace
- M Dual Mechanical Systems for Comfort & Efficiency
- N Optional Nanny or Nurse Suite with Kitchenette & Optional Back Entry
- OF Outdoor Fireplace/Glass See Through to Inside
- OR Outdoor Room 200sf
- OT Outdoor Terrace 107sf off Master Bedroom
- P Pantry
- RW Roof Windows over Master Suite and Bath at Sloped Ceiling
- S Built-in Storage
- ST Free Standing Tub in Master Bath
- T Trash Room with Chute to Ground Floor Level
- WD Laundry Room for Washer/Dryer with laundry Sink

**CROYDON
 FOURTH FLOOR**

3,028 sf heated
 3 Bedroom, 3-1/2 Bath

Square Footages shown are approximate based on architectural sketches and may vary slightly from final plans and appraisal.